

1  
R0805

Austin Tx.

11-8-08

Session "D"

16:06

08110801D



A. across  
and  
across  
arch  
across  
arching  
over

S2

Hard

Flat

layered (S4)

arching over

large S4

Aol bk.  
Hills  
mountain

rocky  
dark  
Brown  
Black ?

Tall  
- spiky  
Vertical  
repetition

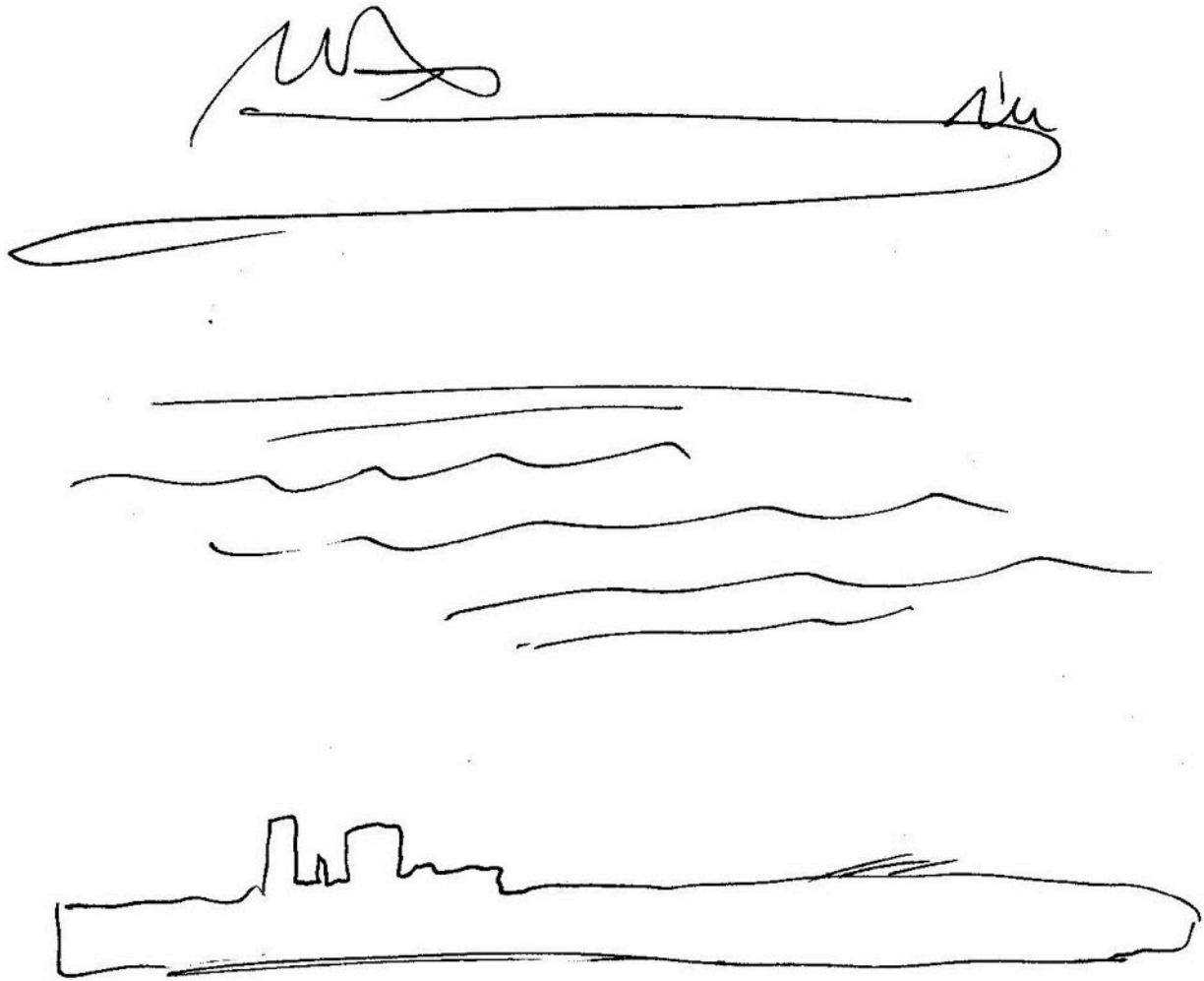
A: Bk:  
interesting



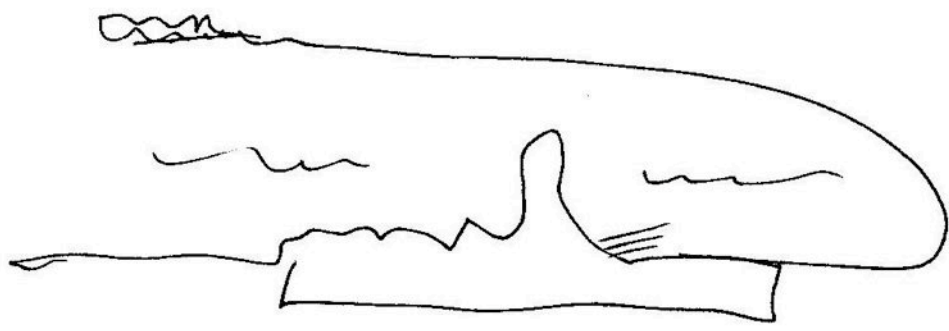
steep  
white  
cold  
Crusty

Aol Bk.  
Prev target  
mountains

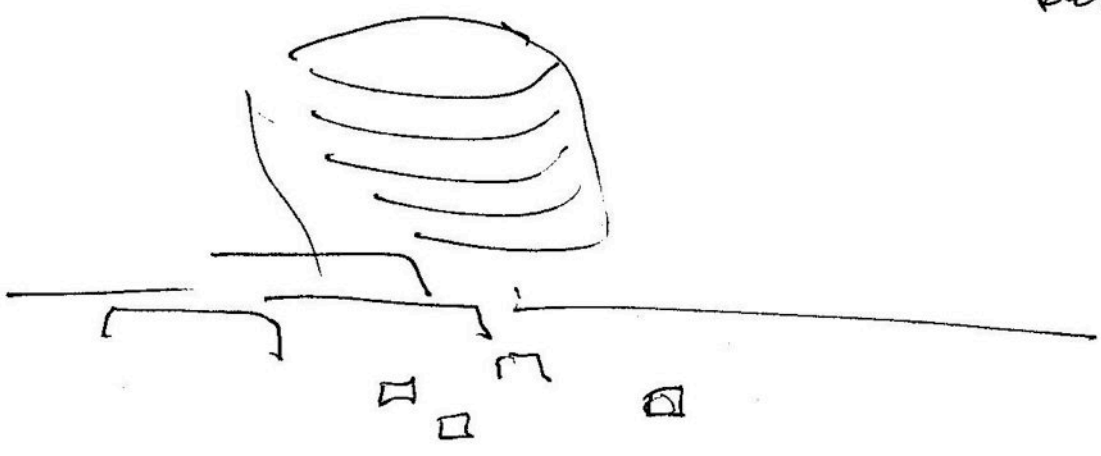
Hard  
Vertical  
Smooth  
Jagged



Asl bk:  
metal  
Ship



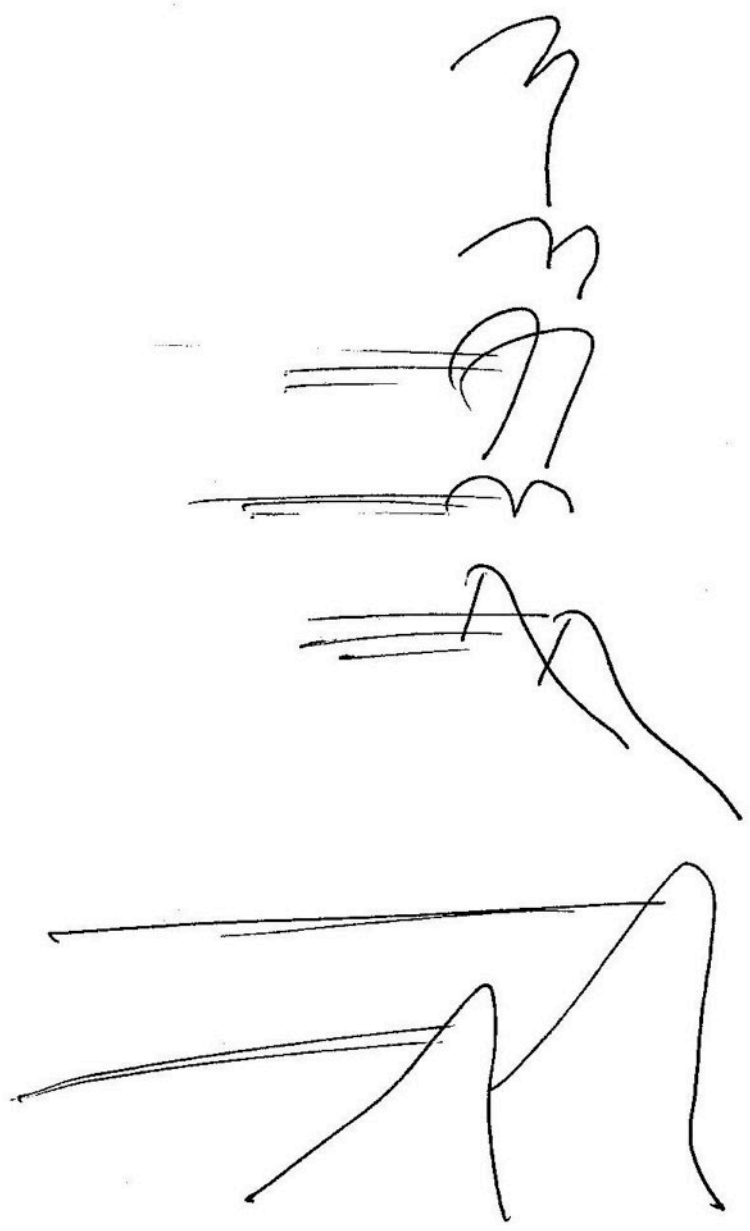
Aol b6  
Battle ship



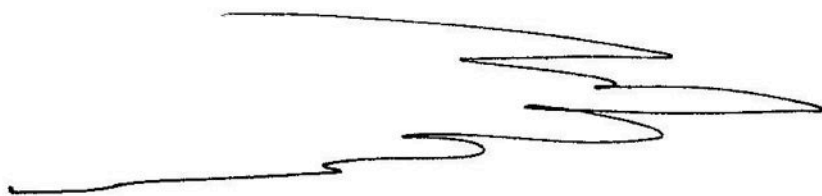
Segmented (S4)  
chambered (S4)  
moving S4  
Horizontal  
Liquidity

Aol bki  
Watery Bay

0811 0801D ~~zz~~ ~



metallic  
 thin  
 Big (54)  
 Tall



Vast sy

A: bk.

Vast Surroundings

particulate (sy)

Aol bk.  
Snow



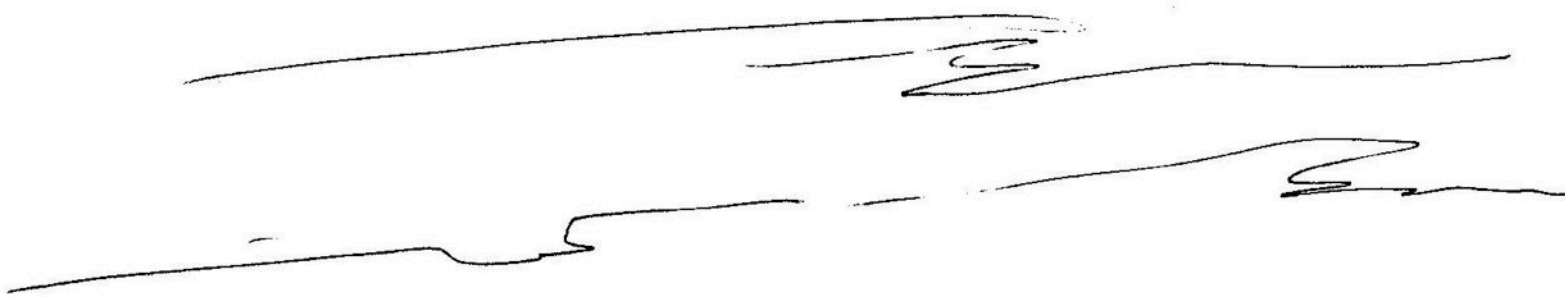
partially enclosed (sy)

conf-bk.



Aol bk.  
national park

retired(54)



white  
 cylindrical  
 angled up  
 structure

Domed (54)  
 Double ( )

101 Bk.  
 Beach front



# Summary

Elements of smooth, segmented chambered and repetition -  
 the target has elements of Hard, Flat, layered, and  
 arching over, possibly Double Domes ~~like two~~ Reminds me like  
 two Hills or mountains.

other elements white, cylindrical, angled up, steep white, dark brown, steep white, cold crusty  
 I sensed looking at the target over an expansive  
 structure.

View. A bit of a sense of cold and particulate  
 Aols —

I had some sense of a ~~small~~ semi enclosure  
 like a large body of water with a shore.  
 mountain like protrusions distant, and Aol  
 of a metal battle ship.

0811 0801 D

R0805  
Austin TX

11-8-08

Session 'D'

## Post-Session reflections

---

A very strong element of Double Domes intruded into both ideograms and this session. I felt early on that it was simple and there was not much to detail. I then felt I embellished a few details - I felt good and then like there was so much time but little else I wanted to fill the session with 6/10